

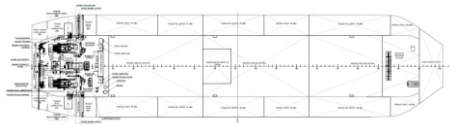
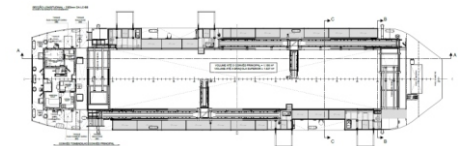
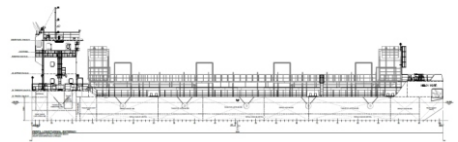
DREDGE BELOV PIATĂ

Suction Dredge Vessel

BELOV



Dredge **Belov Piată** was launched in 2024. She has a load capacity of 1640 tons for a 3120 m³/h suction capacity distributed in 4 pumps and 4 A-frames. The dredger has a length of 66.45 m, moulded breadth of 16.5 m and a draft of 2.94m. **Belov Piată** was designed in 3D and has high quality finish.



REGISTRATION

Vessel Name: BELOV Piată

Type: Dredger Vessel

Class: RBNA

Year: 2024

Builder: BELOV Offshore Industrial Ltda

Owner: BELOV Group

MAIN PARTICULARS

DIMENSIONS

Length overall	66.45 m
Moulded breadth	16.50 m
Depth	3.80 m
Draft	2.94 m
Deadweight	1.632 t
Net tonnage	221
Gross tonnage	739

CAPACITIES

Fuel oil	83.30 m ³
Fresh water*	44.8 m ³
Load volume capacity	1.827 m ³

ACCOMMODATIONS

Accommodation for	12 POB
Cabins	5

1 mess room, laundry, galley, stores, control room, colective bathroom, change room.

Accommodations designed and constructed according to international standards set by classification societies, using high-strength materials and imported lining panels.

OPERATION

MACHINERY

Caterpillar generator (Main)	2 x 910 kW
Cummins generator (Auxiliar)	1 x 180 kW

PERFORMANCE

Dredge pump	4 x 780m ³ /h
Load capacity	1.640 ton

EQUIPMENT & ELETRONICS

DECK EQUIPMENT

A-Frame	4 x 4.80 t
Windlass	7.5t@ 9m/min
Capstan	2 x 5.0 t
Anchor	2 x 1.195 Kg

ELETRONICS

9 Ghz Radar, GPS, Echo Sounder, fixed and portable VHF, AIS.

ALARM & MONITORING SYSTEM

AMS (MCA sets, open doors and compartments), equipments status and tank level indication, IHM Touch Screen (12 inches) and CCTV.

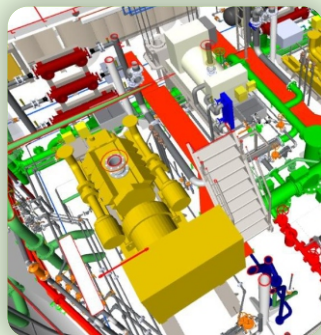
SAFETY EQUIPMENT

Life raft: 1 x auto inflatable for 20 people each
Life vests: 17 x class 2
17 fire detection system units
Fire-fighting/black water pump 2 x 55 m³/h
Emergency fire-fighting pump 1 x 25 m³/h

GENERAL EQUIPMENT

Black water pump	1 x 5 m ³ /h
Gray water pump	1 x 5 m ³ /h
Ballast pump	2 x 130 m ³ /h
Bilge water separator	1 x 1 m ³ /h

PHOTO GALLERY





www.belov.com.br

Matriz – Escritório Central

Rua Quinta dos Lázaros nº 50 - Quintas
Salvador - BA • CEP: 40303-300
Telefone: (71) 3416.1900

Canteiro Marítimo de Mapele - CMM

Rua do Túnel s/n - Mapele
Simões Filho - BA • CEP: 43727-050
Telefone: (71) 3416.1970

Base Guapimirim

Estrada Martha Alcântara Fares nº3000, Lote 40 - Bairro/Distrito Cotia
Guapimirim - RJ • CEP: 25947-040
Telefone: (21) 2632.4683

Base Macaé

Avenida Nossa Senhora da Glória nº1181 - 4º andar - Praia Campista
Macaé - RJ • CEP: 27923-215
Telefone: (22) 2773.4023

