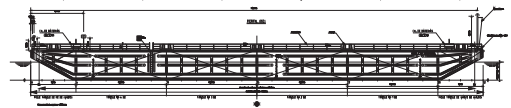


# BELOV BARRA

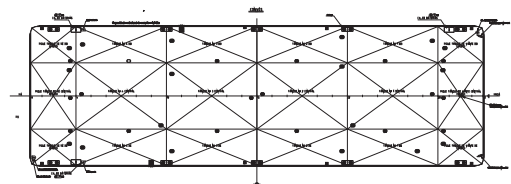
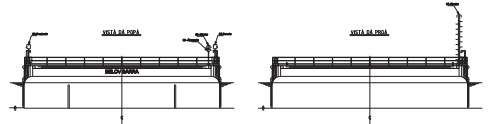
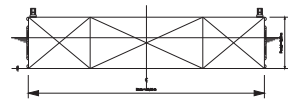
Deck Load Barge



Seagoing deck load barge for general cargo transportation, infrastructure project support, and heavy-lift operations. **Belov Barra** is 75.00 meters in length and 23.00 meters in moulded breadth, with a draft of 5.00 meters and a cargo capacity of 4973.5 t.



SEÇÃO LONGITUDINAL



## REGISTRATION

*Vessel Name:* BELOV Barra

*Type:* Support Barge

*Class:* RBNA

*Year:* 1973

*Builder:* Verolme Estaleiros Reunidos do Brasil S.A.

*Owner:* BELOV Group

## MAIN PARTICULARS

### DIMENSIONS

Length overall	75.00 m
Moulded breadth	23.00 m
Depth	5.00 m
Draft	3.00 m
Net tonnage	557
Gross tonnage	2230

### CAPACITIES

Deadweight	4973.50 t
Light displacement	1150.00 t
Loaded displacement	6123.50 t
Deck load	3.50 t/m <sup>2</sup>

## EQUIPMENT & ELETRONICS

### MOORING AND ANCHORING EQUIPMENT

Hydraulic winch: 4 x 40 t  
 Anchor: 4 x 4.0 t

## PHOTO GALLERY



**Overhead View**  
 Operation Site



**Overhead View**  
 Operation Site



**Diagonal Overhead View**  
Operation Site



**Perspective View (Detail)**  
Operation Site



**Diagonal Overhead View**  
Operation Site



**Perspective View**  
Operation Site



**Overhead Side View**  
Operation Site



**Top-Down Side View**  
Operation Site





[www.belov.com.br](http://www.belov.com.br)

**Matriz – Escritório Central**

Rua Quinta dos Lázarus nº 50 - Quintas  
Salvador - BA • CEP: 40303-300  
Telefone: (71) 3416.1900

**Canteiro Marítimo de Mapele - CMM**

Rua do Túnel s/n - Mapele  
Simões Filho - BA • CEP: 43727-050  
Telefone: (71) 3416.1970

**Base Guapimirim**

Estrada Martha Alcântara Fares nº3000, Lote 40 - Bairro/Distrito Cotia  
Guapimirim - RJ • CEP: 25947-040  
Telefone: (21) 2632.4683

**Base Macaé**

Avenida Nossa Senhora da Glória nº1181 - 4º andar - Praia Campista  
Macaé - RJ • CEP: 27923-215  
Telefone: (22) 2773.4023

